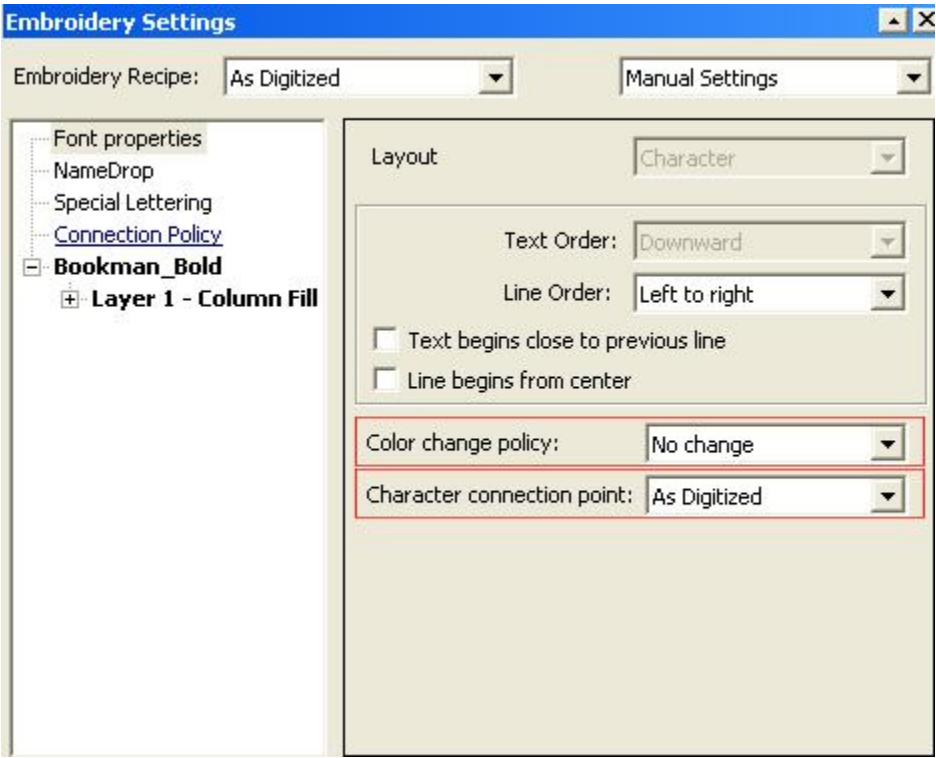


Bookman Bold Font Instructions

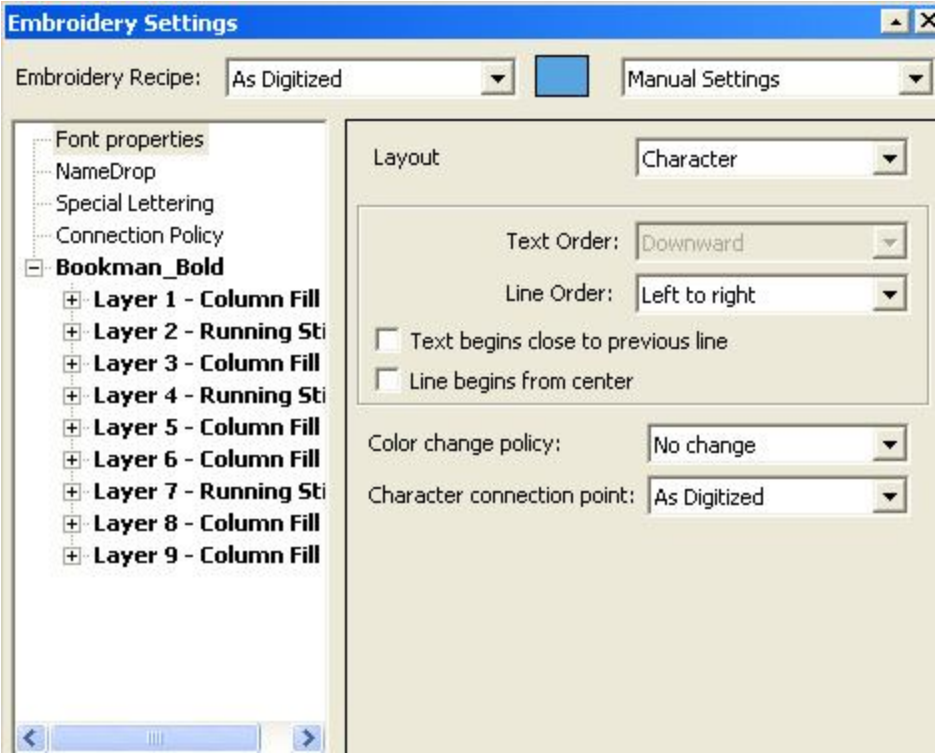
This font is designed to stitch in a particular sequence. For this reason, the font is not closest point connection compatible. For best results, you should ensure that you trim the thread between each letter.

Additionally, for this font to stitch correctly the embroidery settings should be set to the following



Color Change Policy should be set to **No Change**. This will ensure that the system does not interpret the different layers of the characters as different colors

Character Connection Point must be set to **As Digitized**. This will ensure that the blocks that make up the individual letters stay in sequence as the digitizer intended. Failure to set this properly could result in trimming in inter letter connections and incorrect overlapping of blocks.



When the text is initially entered, the embroidery settings will appear as any other font as shown above, However, if the font is brought back to wire-frame, the embroidery settings will display all of the individual layers of the characters. As some characters have more layers than others, for instance W has many more layers than C, this list will change depending on the characters typed. This behavior is normal and is designed into the system to allow you to adjust the parameters for any segment of the font.